

HALE TOWNSHIP

Each township has six files containing six sections in each, and one file containing all 36 sections.

Hale01to06.pdf
Hale07to12.pdf
Hale13to18.pdf
Hale19to24.pdf
Hale25to30.pdf
Hale31to36.pdf
HaleAll36.pdf

The points are listed starting with the point above the SE corner and continuing in a counter-clockwise rotation around the section. This normally begins with the East point, Northeast, then North, but may also include Witness Corners, and/or Meander Corners.

Definitions

Witness Corner: A witness corner “stands in” when the true corner cannot be monumented or occupied because of difficult terrain or obstruction of the corner sight. The witness corner must be on the section line and is usually 5 or 10 chains away from the true corner.

Meander Corner: The intersection of a township, range, or section line and the banks of a navigable stream or meandering body of water.

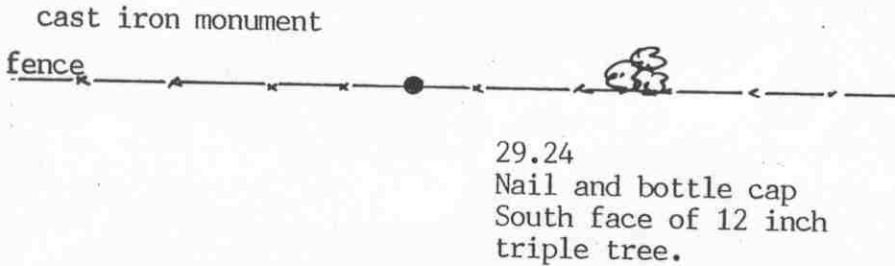
Certificate of Location of Government Corner

SKETCH OF REFERENCE TIES
(NO SCALE)



SECTION 7

SECTION 8



2638.08 feet to northeast corner of Section 7
 2662.71 feet to southeast corner of Section 7
 Angle at quarter corner (west side) 179°57'25"

Statement of evidence relative to this corner location on sheet 2

I hereby certify that this document was prepared by me or under my direct supervision.

Willard Pellinen
 Willard Pellinen
 McLeod County Surveyor
 License No. 9626

Date August 17, 1992

OFFICE OF THE COUNTY RECORDER
MCLEOD COUNTY, MINNESOTA.

I hereby certify that this document was filed in this office at 9 o'clock A.M. on the 1st day of Sep, 1992.

Carmen Ostlie, County Recorder
 By _____, Deputy

Document No. 247427

EAST QUARTER corner, Section 7, Township 117 North, Range 28 West

Certificate of Location of Government Corner

1856. Oscar Taylor of the General Land Office established this corner. He set a post and marked 2 oaks for bearing trees.

August 26, 1976. McCombs Knutson Associates. (Dickman Knutson, county surveyor) set a cast iron monument along an east-west fence line which has been accepted as the quarter line of Sections 7 and 8 by adjoining land owners. Knutson set the monument using 1899 distance by E. L. Higgins, county surveyor, from the center of Section 8.

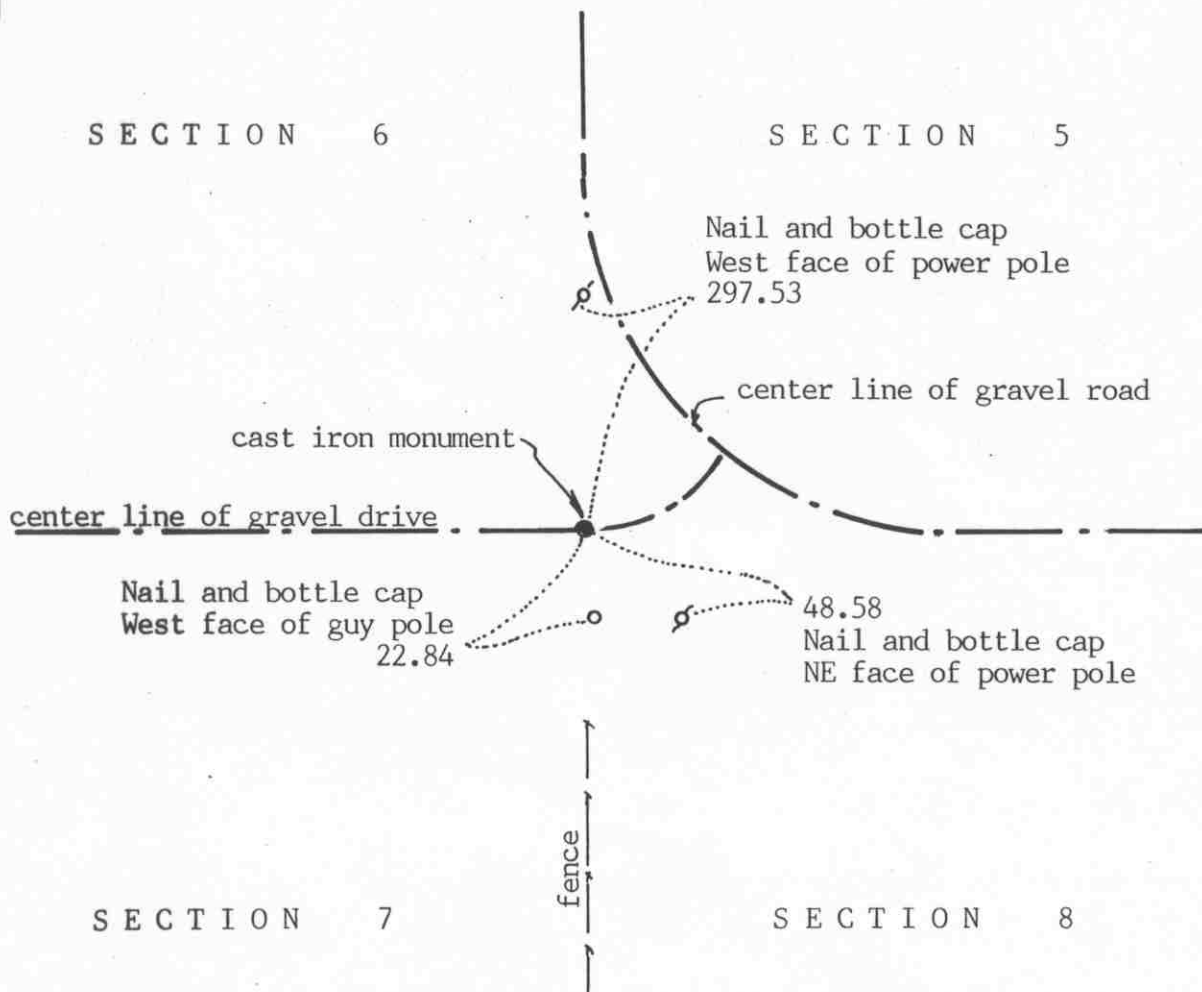
This falls within 1 foot of being on a straight line between the northeast and southeast corners of Section 7, and 12.32 feet north of a split between the section corners.

February 6, 1992. We found the monument in good condition and checked the ties.

There being no evidence to the contrary, the monument set by Knutson is accepted as marking the quarter corner. It fits an occupation line, the east-west fence, is close to being on line between the section corners and is the same distance to the center of Section 8 as Higgins had in 1899.

Certificate of Location of Government Corner

SKETCH OF REFERENCE TIES
(NO SCALE)



Statement of evidence relative to this corner location on sheet 2

I hereby certify that this document was prepared by me or under my direct supervision.

Willard Pellinen

Willard Pellinen
McLeod County Surveyor
License No. 9626

Date June 5, 1992

OFFICE OF THE COUNTY RECORDER
MCLEOD COUNTY, MINNESOTA.

I hereby certify that this document was filed in this office at 9 o'clock A.M. on the 9th day of June, 1992.

Armen Ostlie, County Recorder

By _____, Deputy

Document No. 245783

NORTHEAST corner, Section 7, Township 117 North, Range 28 West

Certificate of Location of Government Corner

1856. Oscar Taylor of the General Land Office first established this corner. He set a post and marked an aspen, a cherry tree, an elm and a linden tree for bearing trees.

19?? The County Highway Department found a stone at the corner.

July 13, 1973. McCombs Knutson Associates (Dickman Knutson, county surveyor) dug for the corner with a backhoe. They found a spike at the surface of the road. Below the spike, down 2 feet below the surface, they found 6 inch diameter stone with a wood stake beside it.

August 21, 1973. Knutson set a McLeod County cast iron monument over the stone and took reference ties.

August 14, 1991. We found the monument in good condition down 6 inches below the road surface. We took new reference ties.

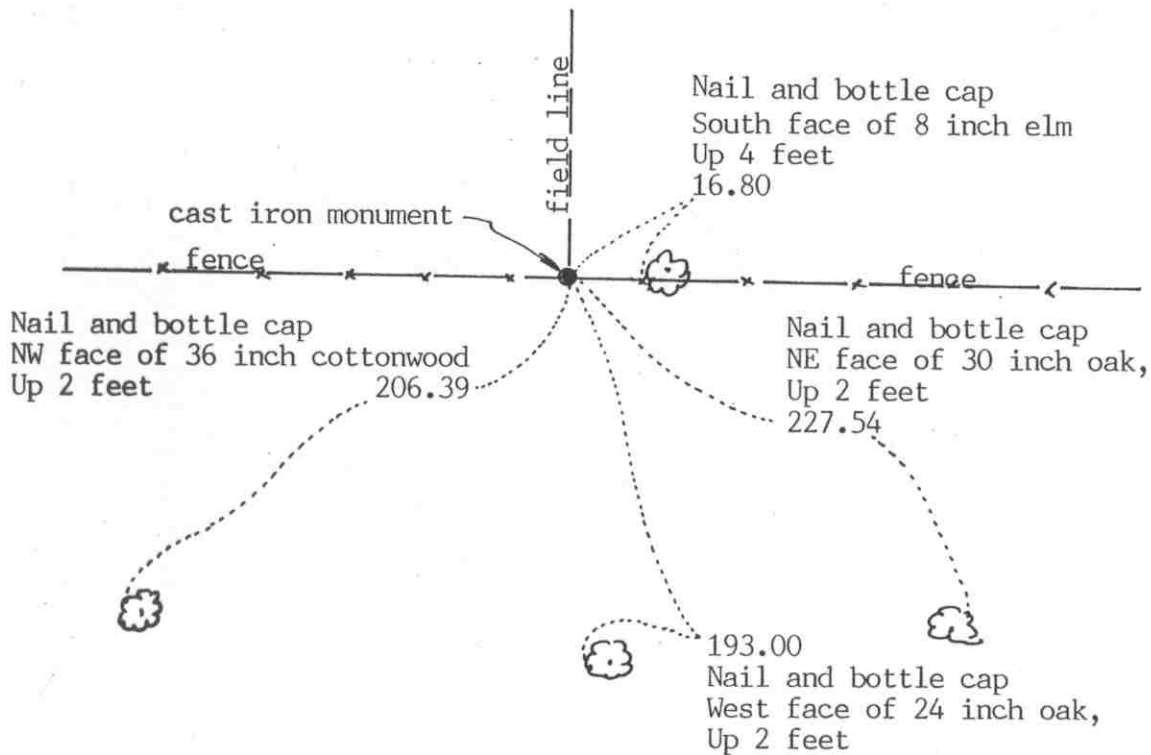
We accept the monument set by Knutson as marking the correct location of the section corner. It was set over an older monument, the stone, and it fits occupation lines, the center line P.I. of the county road and is in line with a fence to the south.

Certificate of Location of Government Corner



SKETCH OF REFERENCE TIES
(NO SCALE)

SECTION 6



SECTION 7

Statement of evidence relative to this corner location on sheet 2

I hereby certify that this document was prepared by me or under my direct supervision.

Willard Pellinen
Willard Pellinen
McLeod County Surveyor
License No. 9626

Date August 27, 1992

OFFICE OF THE COUNTY RECORDER
MCLEOD COUNTY, MINNESOTA.

I hereby certify that this document was filed in this office at 9 o'clock A.M. on the 1st day of Aug, 1992.

Carmen Ostlie, County Recorder

By _____, Deputy

Document No. 247428

Certificate of Location of Government Corner

1856. Oscar Taylor of the General Land Office established this corner. He set a post and marked 2 elms for bearing trees.

July 5, 1979. William Hlavka, 63 years old, had lived in the Northeast Quarter of Section 7 all his life, said a 4 inch diameter steel pipe filled with concrete is the corner. This was set about 20 years ago at the intersection of the fences which had been accepted as the correct quarter corner by adjoining land owners. McCombs Knutson Associates, (Dickman Knutson, county surveyor) took reference ties to this pipe.

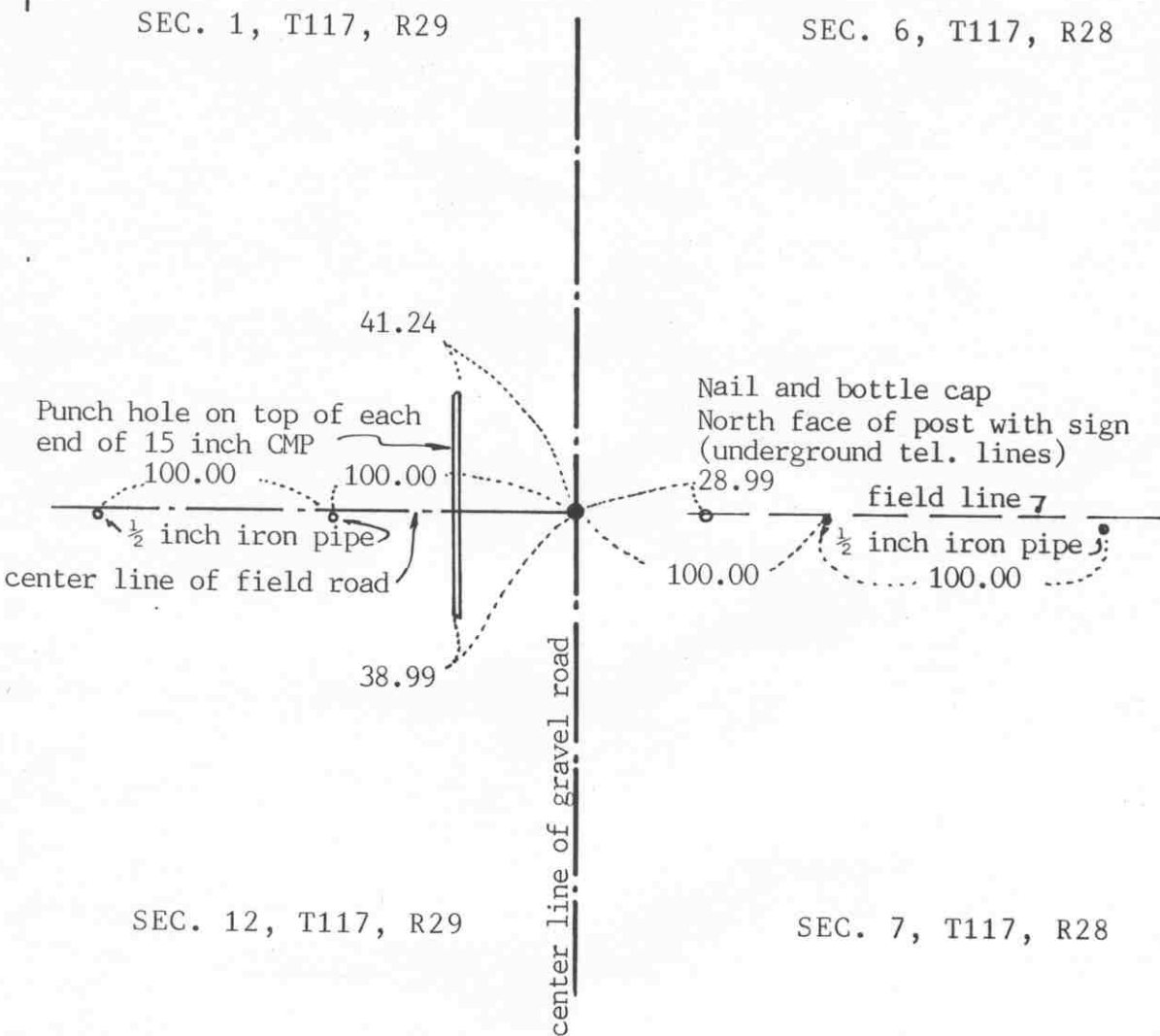
February 6, 1992. We found the iron pipe in good condition, but all the old ties had been destroyed. We took new available ties.

The steel pipe is accepted as marking the quarter corner. It fits occupation lines, the fences, and the land owners have accepted it as the correct corner.

Certificate of Location of Government Corner

SKETCH OF REFERENCE TIES

(NO SCALE)



Statement of evidence relative to this corner location on sheet 2

I hereby certify that this document was prepared by me or under my direct supervision.

Willard Pellinen
Willard Pellinen
McLeod County Surveyor
License No. 9626

Date March 9, 1991

OFFICE OF THE COUNTY RECORDER MCLEOD COUNTY, MINNESOTA.

I hereby certify that this document was filed in this office at 2 o'clock P. M. on the 1st day of April, 1991.

Carmen Ollie, County Recorder

By _____, Deputy

Document No. 238157

Certificate of Location of Government Corner

August, 1855. John Ryan of the General Land Office established this corner. He set a post and marked 4 aspens for bearing trees.

September 19, 1969. McCombs Knutson Associates (Dickman Knutson, county surveyor) measured the east line of Sections 1 and 12 and set a temporary northeast corner of Section 12 on the center line of the road in line with a fence running east. Mr. Hlavka, 71 years old, who lives in the northwest quarter of Section 7 said the fence has been in the same place since his father used to farm.

April 17, 1970. Knutson dug for the corner, John Tupa from Hutchinson with a backhoe. They found a stone and a wood stake down 2 feet below the road surface on the center line of the road in line with the fence to the east. They took reference ties.

Knutson set a McLeod County cast iron monument at the corner.

April 8, 1981. We found the monument and set iron piped 100.00 feet east and 100.00 feet west, in line. The old reference ties to be destroyed by road construction.

June 18, 1986. We set an iron pipe over the cast iron monument which has been buried deep by road construction. We took new reference ties.

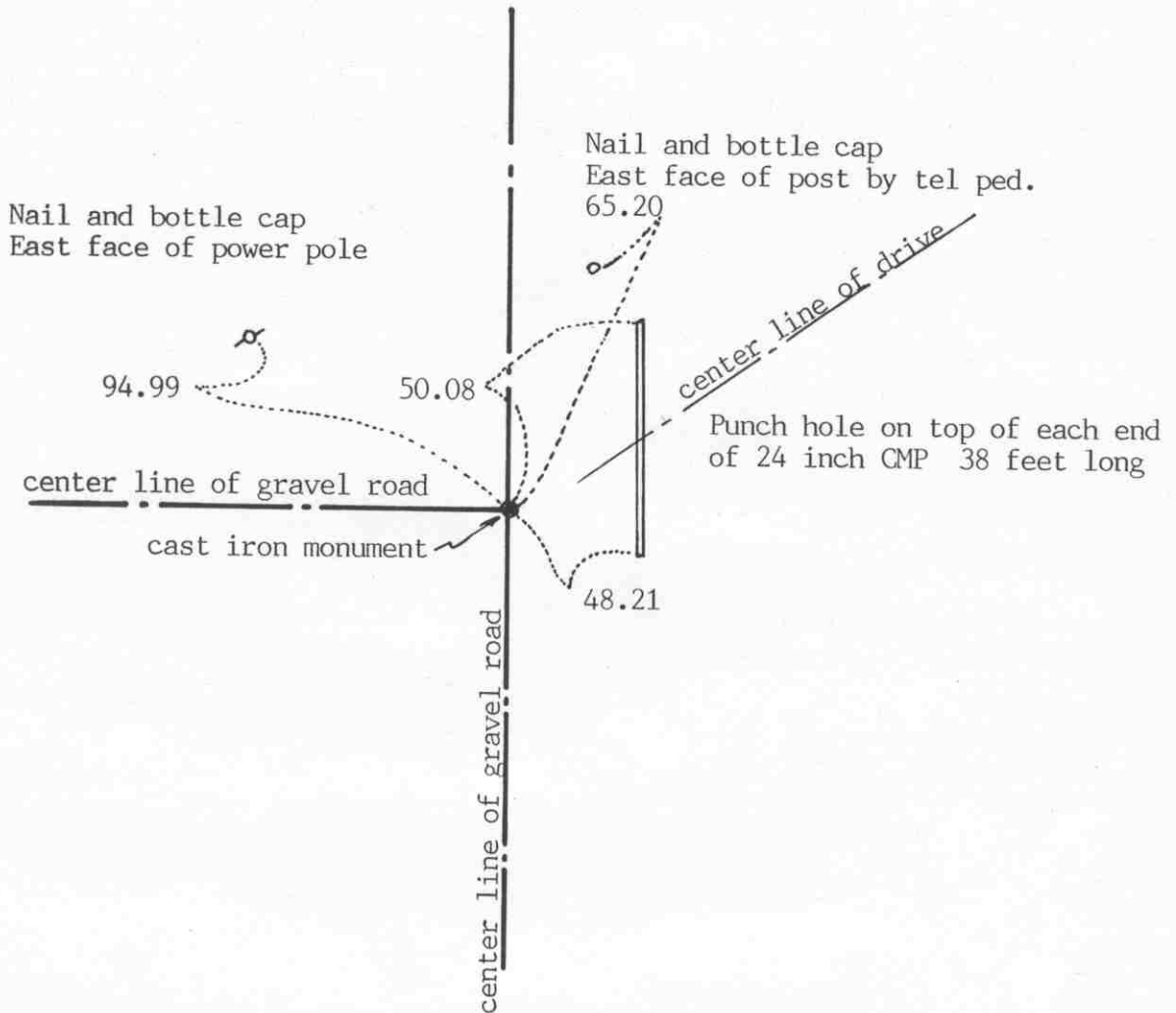
May 2, 1990. We found the iron pipe and the reference ties ok.

We accept the stone and wood stake found by Knutson as having perpetuated the correct location of the section corner.

EAST QUARTER corner, Section 12, Township 117 North, Range 29 West

Certificate of Location of Government Corner

SKETCH OF REFERENCE TIES
(NO SCALE)



SECTION 12, T 117, R 29

SECTION 7, T 117, R 28

Statement of evidence relative to this corner location on sheet 2

I hereby certify that this document was prepared by me or under my direct supervision.

Willard Pellinen
Willard Pellinen
McLeod County Surveyor
License No. 9626

Date March 9, 1991

OFFICE OF THE COUNTY RECORDER
MCLEOD COUNTY, MINNESOTA.

I hereby certify that this document was filed in this office at 2 o'clock P.M. on the 1st day of April, 1991.

Carmen Ottilie, County Recorder
By _____, Deputy

Document No. 238158

EAST QUARTER corner, Section 12, Township 117 North, Range 29 West

Certificate of Location of Government Corner

August, 1855. John Ryan of the General Land Office set a post at the corner and marked an elm and an aspen for bearing trees.

September 19, 1969. McCombs Knutson Associates (Dickman Knutson, county surveyor) measured the east line of Section 12 and set a temporary quarter corner on the center line intersection of the roads. This falls within a few feet of being on a split between the section corners. Mr. Hlavka, 71 years old, lives in the Northwest Quarter of Section 7, said the corner should be at the center line intersection.

April 17, 1970. Knutson dug for the corner, John Tupa from Hutchinson with a backhoe. They found a stone and a wood stake down $1\frac{1}{2}$ feet below the road surface.

Knutson set a McLeod County cast iron monument at the corner.

April 10, 1981. We found the monument and took extra reference ties. Old ties will be destroyed by road construction.

June 18, 1986. We found the top of the monument had been broken off by road construction. We set a $\frac{1}{2}$ inch by 14 inch iron pipe over the bottom half of the monument and took new reference ties.

May 2, 1990. We found the reference ties still good to the iron pipe.

We accept the stone and wood stake found by Knutson as having perpetuated the correct location of the quarter corner.

Certificate of Location of Government Corner

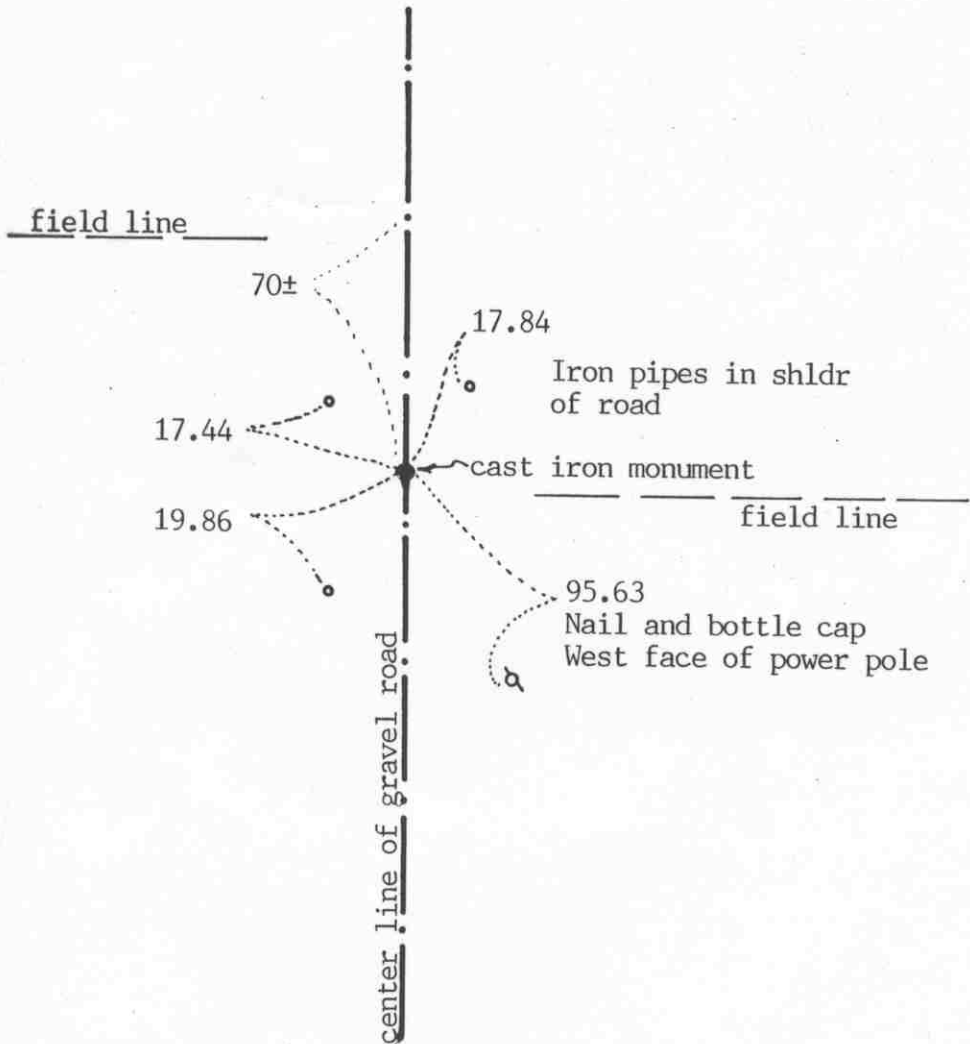


SKETCH OF REFERENCE TIES

(NO SCALE)

SECTION 8

SECTION 9



Statement of evidence relative to this corner location on sheet 2

I hereby certify that this document was prepared by me or under my direct supervision.

Willard Pellinen
Willard Pellinen
McLeod County Surveyor
License No. 9626

Date July 16, 1992

OFFICE OF THE COUNTY RECORDER
MCLEOD COUNTY, MINNESOTA.

I hereby certify that this document was filed in this office at 9 o'clock A.M. on the 20th day of July, 1992.

Armen Ostlie, County Recorder

By _____, Deputy

Document No. 246516

Certificate of Location of Government Corner

1856. Oscar Taylor of the General Land Office set a post and marked 2 oaks for bearing trees.

November 18, 1899. E.L.Higgins found a stone at the corner. He also found indication of a corner 74 feet north and 48 feet west of the stone. He used the stone and found a stone at the center of Section 8 along the east-west quarter line. He measured 2510 feet along the west line of the Southeast Quarter of Section 8 and 2495 feet along the west line of the East Half of the Southeast Quarter. This would make the east line of the Southeast Quarter 2480 feet long.

May 1, 1972. McCombs Knutson Associates (Dickman Knutson, county surveyor) measured the east line of Section 8 and set a temporary quarter corner on the center line of the north south road in line with a field line to the east.

May 2, 1972. Knutson ran the east-west quarter line of Section 8 to check the fence near the center of the section. Using the temporary quarter corner, the fence near the center was 2 feet south of the quarter line.

May 8, 1972. Knutson dug for the corner, John Tupa from Hutchinson with a backhoe. They found a 12 inch diameter stone down $2\frac{1}{2}$ feet below the surface of the road, about 6 feet north of their temporary quarter corner.

September 30, 1972. Knutson checked the fence intersection near the center of Section 9 for line and found it to be 5 feet north of the east west quarter line, using the location of the found stone as the quarter corner.

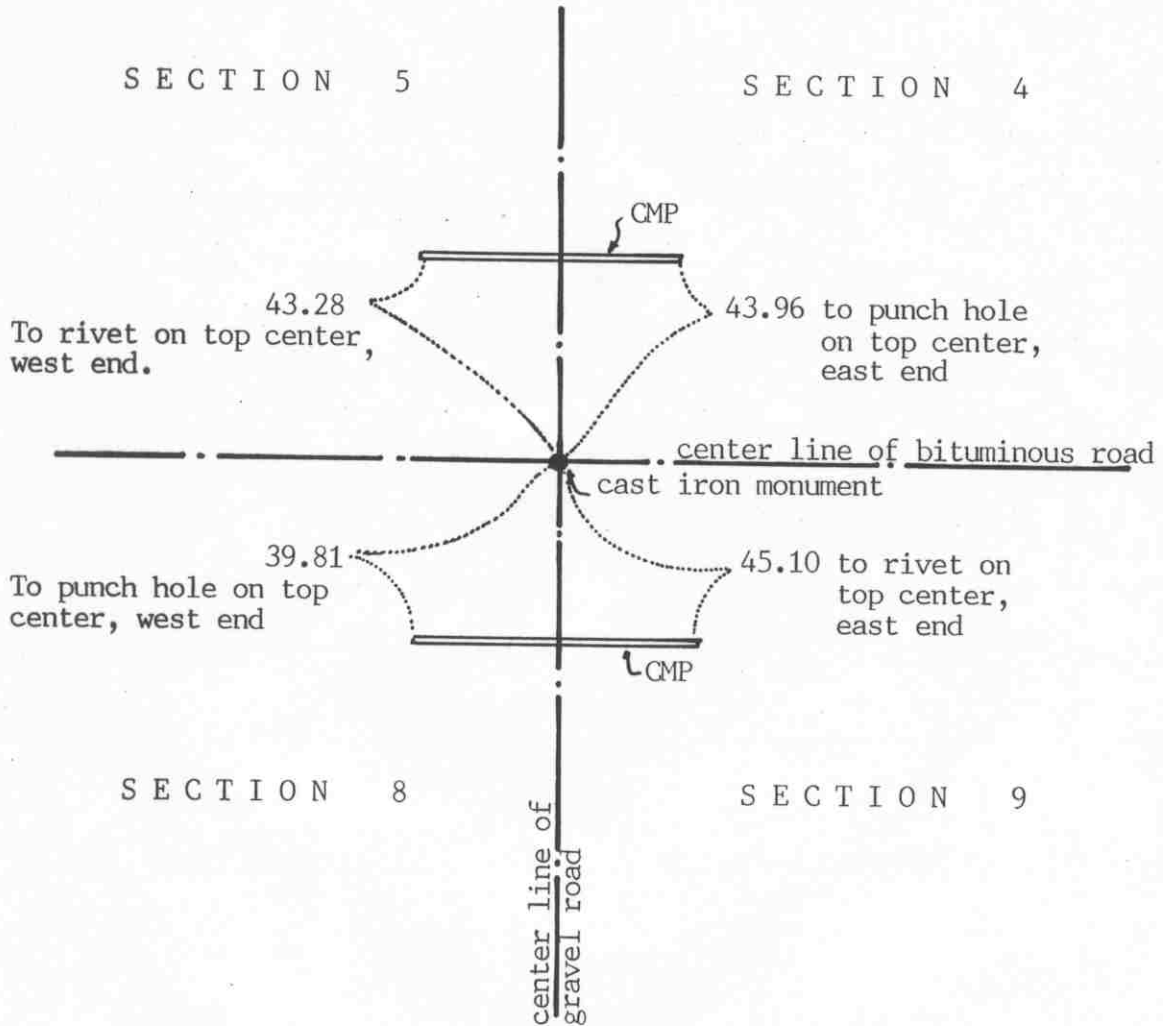
August 7, 1973. Knutson set a McLeod County cast iron monument.

This corner is about 70 feet south of a split between the section corners. There was a field line running west about 68-70 feet north of the monument. If the corner was set half way between the section corners, a field line running east $\frac{1}{4}$ mile north would be on the 1/16 line and a field line running west $\frac{1}{4}$ mile south would also be on the 1/16 line, but the fence intersection near the center of Section 9 would be 30 feet south of the quarter line and the fence near the center of Section 8 would be 40 feet south of the quarter line. Knutson measured 2481 feet to the southeast corner compared with 2480 by Higgins in 1899.

August 22, 1991. We found the monument in good condition down 4 inches below the road surface and took new reference ties.

Certificate of Location of Government Corner

SKETCH OF REFERENCE TIES (NO SCALE)



Statement of evidence relative to this corner location on sheet 2

I hereby certify that this document was prepared by me or under my direct supervision.

Willard Pellinen
Willard Pellinen
McLeod County Surveyor
License No. 9626

Date Feb. 21, 1992

OFFICE OF THE COUNTY RECORDER
MCLEOD COUNTY, MINNESOTA.

I hereby certify that this document was filed in this office at 9 o'clock A.M. on the 6th day of May, 1992.

Carmen (Belie), County Recorder

By _____, Deputy

Document No. 245080

Certificate of Location of Government Corner

This corner was originally established by the General Land Office in 1856. Oscar Taylor set a post and marked 2 oaks and 2 hickory trees for bearing trees.

November 15, 1924. E. L. Higgins, surveyor, found a stone at the corner. He measured 2642 feet to the east quarter corner of Section 5.

1925. Carlisle Madson, Sr., county surveyor, found a stone at the corner. He measured 2671 feet to the north quarter corner of Section 8 and 2640.5 feet to the east quarter corner of Section 5.

1977. County Highway Department field notes show a rock at the corner and a distance of 2608 feet to the north quarter corner of Section 9 and 2674.1 feet to the north quarter corner of Section 8.

May 8, 1972. McCombs Knutson Associates (Dickman Knutson, county surveyor) dug for the corner, John Tupa from Hutchinson with a backhoe. Down 3 feet below the road surface they found a stone with a wood stake beside it. The stone was 5 inches in diameter and 12 inches long, set on end. They took available reference ties.

September 13, 1972. Knutson set a railroad spike at the corner.

September 11, 1973. Knutson set a McLeod County cast iron monument at the corner.

August 14, 1991. We found the monument in good condition and checked the reference ties.

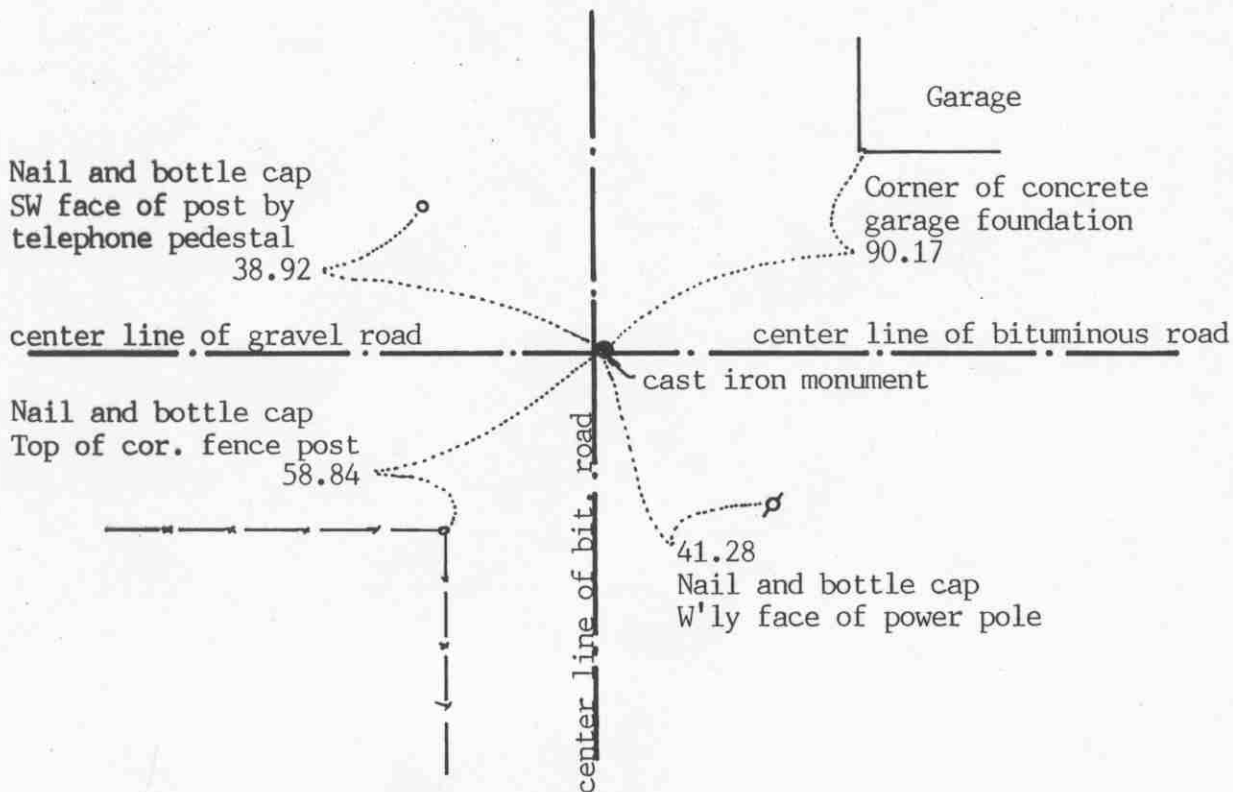
Our measured distance to the north quarter corner of Section 9 is 2609.51 feet and to the east quarter corner of Section 5 is 2640.80 feet.

The cast iron monument is accepted as marking the section corner. It perpetuates the position of an older monument and fits the occupation lines, and very nearly agrees with the older distances to the quarter corners.

Certificate of Location of Government Corner

SKETCH OF REFERENCE TIES (NO SCALE)

SECTION 5



SECTION 8

Statement of evidence relative to this corner location on sheet 2

I hereby certify that this document was prepared by me or under my direct supervision.

Willard Pellinen

Willard Pellinen
McLeod County Surveyor
License No. 9626

Date June 5, 1992

OFFICE OF THE COUNTY RECORDER
MCLEOD COUNTY, MINNESOTA.

I hereby certify that this document was filed in this office at 9 o'clock A.M. on the 9th day of June, 1992.

Armen B. Lie, County Recorder

By _____, Deputy

Document No. 245784

Certificate of Location of Government Corner

1856. Oscar Taylor of the General Land Office first established this corner. He set a post and marked 2 butternut trees for bearing trees.

November 18, 1899. E. L. Higgins, county surveyor found a stone at the corner.

November 15, 1924. Higgins again found the stone at the corner.

April 22, 1925. Carlisle Madson, Sr., county surveyor, found the stone at the corner.

1946. The county highway department found the stone and broken red bricks around it.

May 8, 1972. McCombs Knutson Associates (Dickman Knutson, county surveyor) dug for the corner, John Tupa from Hutchinson with a backhoe. Down 3 feet below the road surface they found a 1 inch square wood hub, 1 foot long. They took reference ties and down at 4 feet below the road surface they found a stone and wood stake with broken bricks around them. This was directly below the wood hub.

September 11, 1973. Knutson set a McLeod County cast iron monument at the corner.

August 14, 1991. We found the monument in good condition down 3 inches below the road surface and took new reference ties.

The monument set by Knutson is accepted as marking the correct location of the quarter corner. It was set over the stone which had perpetuated the location of the corner since before 1899.

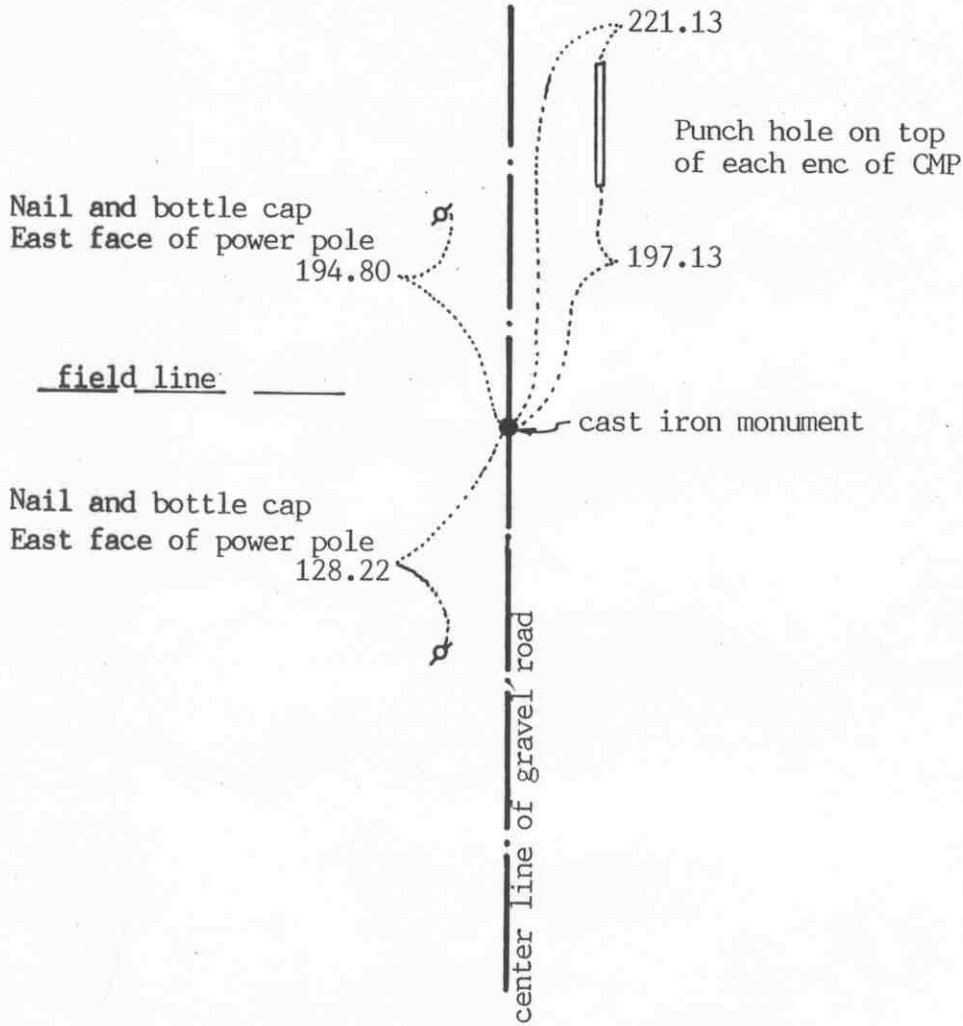
Certificate of Location of Government Corner

SKETCH OF REFERENCE TIES (NO SCALE)



SECTION 9

SECTION 10



Statement of evidence relative to this corner location on sheet 2

I hereby certify that this document was prepared by me or under my direct supervision.

Willard Pellinen
Willard Pellinen
McLeod County Surveyor
License No. 9626

Date May 24, 1992

OFFICE OF THE COUNTY RECORDER MCLEOD COUNTY, MINNESOTA.

I hereby certify that this document was filed in this office at 9 o'clock A.M. on the 9th day of June, 1992.

Carmen Ostlie, County Recorder

By _____, Deputy

Document No. 245786

Certificate of Location of Government Corner

1856. Oscar Taylor of the General Land Office set a post at the corner and marked 2 oaks for bearing trees.

May, 1972. Bill Nowak, 77 years old and Louis Nowak, 68 years old, both say there is a stone at the corner, about 3 to 4 feet south of a field line running west. The stone should be in the center of the north-south road.

May 9, 1972. McCombs Knutson Associates (Dickman Knutson, county surveyor) dug for the corner, John Tupa from Hutchinson with a backhoe. Down 4 feet below the road surface they found a stone which was in the center of the road about 3 feet south of a field line running west. This also was within $1\frac{1}{2}$ feet of being half way between the section corners.

September 13, 1972. Knutson set a McLeod County cast iron monument and took additional reference ties.

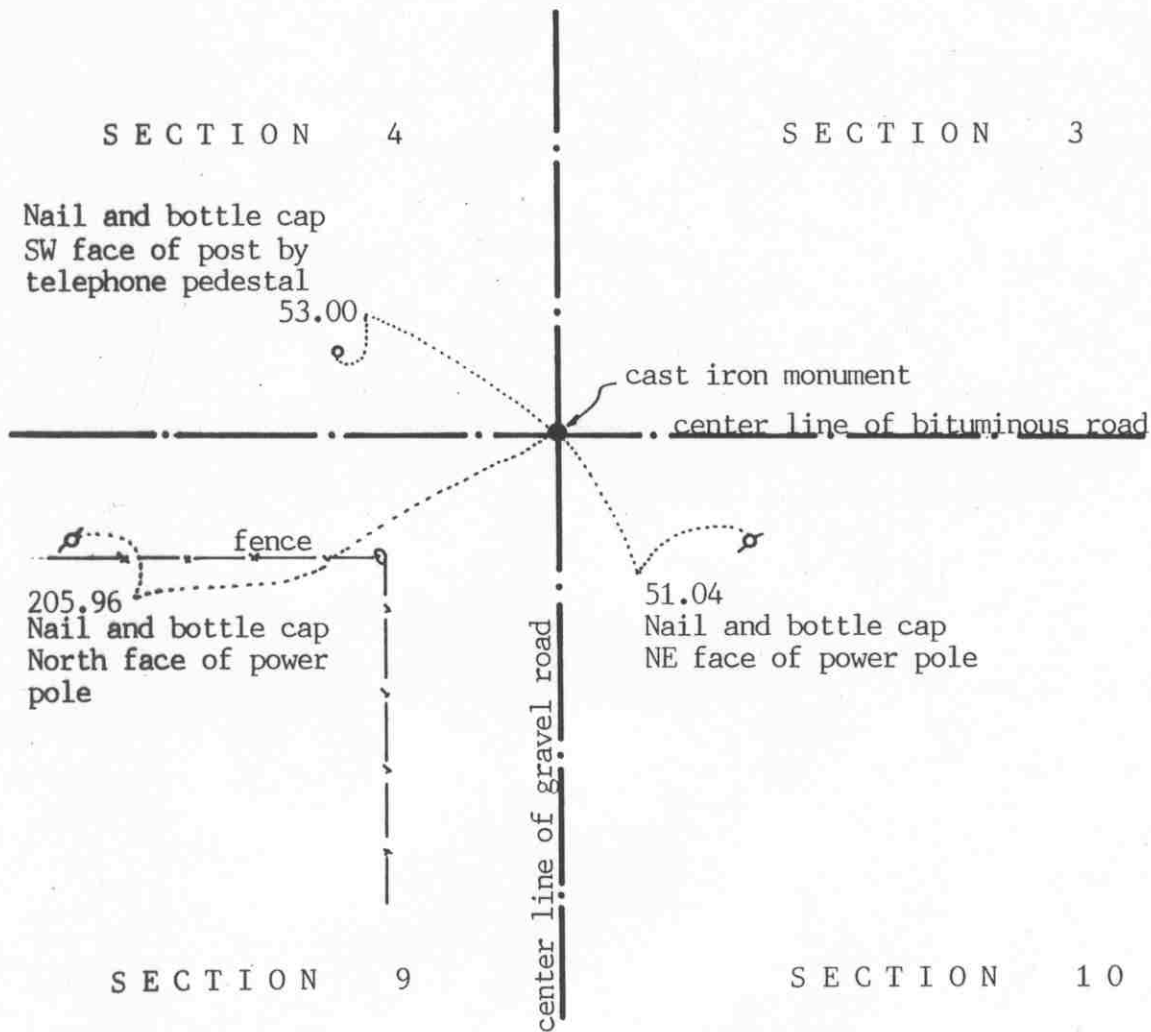
August 14, 1991. We found the monument in good condition and checked the reference ties.

The monument set by Knutson is accepted as marking the correct location of the quarter corner. It perpetuates an older monument, the stone, and it is in the place as per the testimony by long time residents.

NORTHEAST corner, Section 9, Township 117 North, Range 28 West

Certificate of Location of Government Corner

SKETCH OF REFERENCE TIES
(NO SCALE)



Statement of evidence relative to this corner location on sheet 2

I hereby certify that this document was prepared by me or under my direct supervision.

Willard Pellinen
Willard Pellinen
McLeod County Surveyor
License No. 9626

Date May 23, 1992

OFFICE OF THE COUNTY RECORDER
MCLEOD COUNTY, MINNESOTA.

I hereby certify that this document was filed in this office at 9 o'clock A.M. on the 9th day of June, 1992.

Armen Oddie, County Recorder

By _____, Deputy

Document No. 245785

Certificate of Location of Government Corner

1856. Oscar Taylor of the General Land Office set a post and marked 3 oaks and an elm for bearing trees.

May 8, 1972. McCombs Knutson Associates (Dickman Knutson, county surveyor) dug for the corner at the center line intersection of the roads, John Tupa from Hutchinson with a backhoe. Down 3 feet below the road surface they found a 10 inch diameter stone and a rotted wood stake. They took reference ties. Old County Highway Department field notes show a stone at this corner.

September 11, 1973. Knutson set a McLeod County cast iron monument at the corner.

January 22, 1987. We found the cast iron monument in good condition and took new reference ties.

August 14, 1991. We found the monument ok and checked the reference ties.

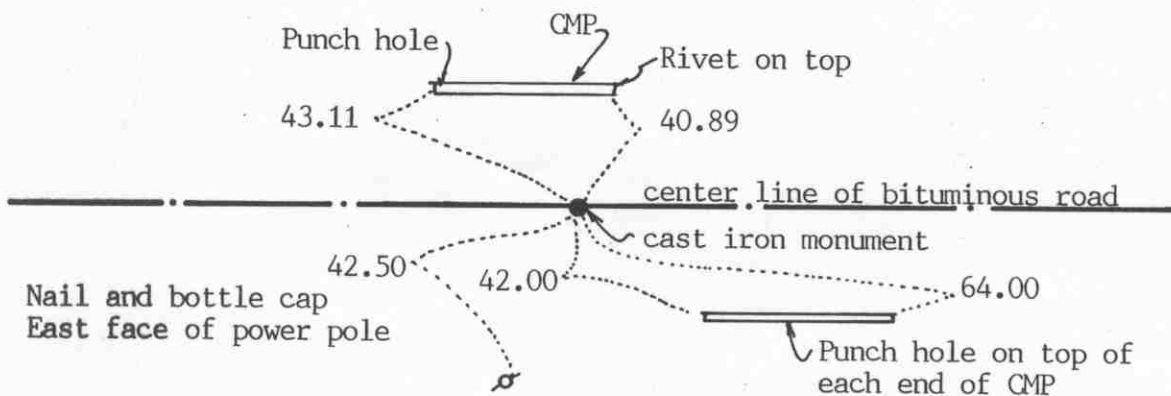
We accept the monument set by Knutson as marking the correct position of the section corner. It perpetuates the location of an older monument, the stone, and it fits occupation lines, the center line intersection of the roads.

Certificate of Location of Government Corner

SKETCH OF REFERENCE TIES (NO SCALE)



SECTION 4



SECTION 9

Statement of evidence relative to this corner location on sheet 2

I hereby certify that this document was prepared by me or under my direct supervision.

Willard Pellinen

Willard Pellinen
McLeod County Surveyor
License No. 9626

Date June 6, 1992

OFFICE OF THE COUNTY RECORDER MCLEOD COUNTY, MINNESOTA.

I hereby certify that this document was filed in this office at 9 o'clock A.M. on the 20th day of July, 1992.

Armen Ostlie, County Recorder

By _____, Deputy

Document No. 246517

NORTH QUARTER corner, Section 9, Township 117 North, Range 28 West

Certificate of Location of Government Corner

1856. Oscar Taylor of the General Land Office set a post and marked a hickory and a butternut tree for bearing trees.

County Highway Department field notes show a wood stake at the corner.

May 8, 1972. McCombs Knutson Associates (Dickman Knutson, county surveyor) dug for the corner, John Tupa from Hutchinson with a backhoe. Down 4 feet below the road surface they found an 8 inch by 8 inch by 16 inch stone, set on end, with a wood stake beside it. They took reference ties to the stone.

September 11, 1973. Knutson set a McLeod County cast iron monument at the corner.

This location agrees with the the county highway department distances to the northeast and northwest corners of the section.

A straight line from this corner to the south quarter corner of Section 9 hits the north-south fence line at the center of the section. A straight line to the north quarter corner of Section 4 hits a north-south field line at the center of Section 4.

August 19, 1991. We found the cast iron monument in good condition and checked the reference ties.

We accept the monument set by Knutson as marking the correct location of the quarter corner. It perpetuates the location of an older monument, the stone, and fits the occupation lines.

This corner is 30 feet west of being half way between the section corners and is 103 feet south of a straight line between the section corners.

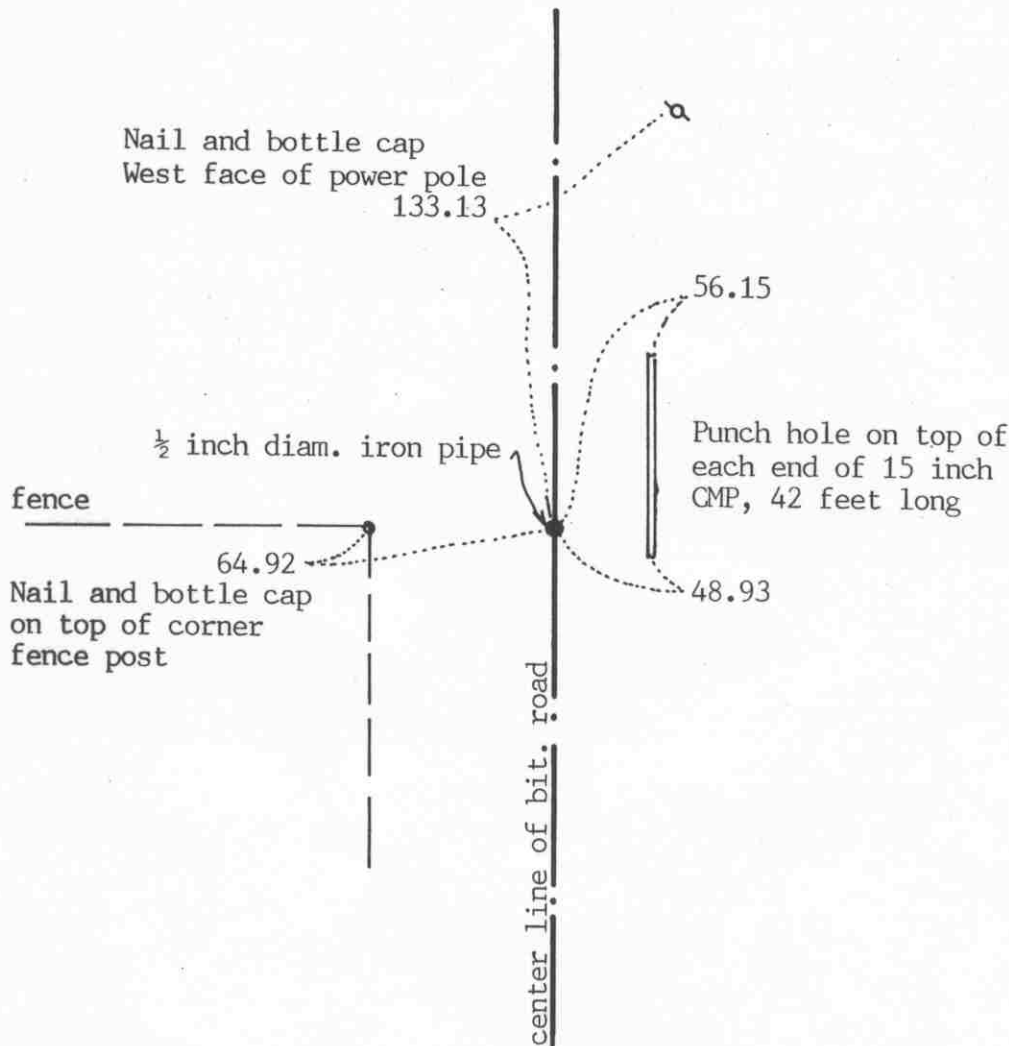
Certificate of Location of Government Corner

SKETCH OF REFERENCE TIES (NO SCALE)



SECTION 10

SECTION 11



Statement of evidence relative to this corner location on sheet 2

I hereby certify that this document was prepared by me or under my direct supervision.

Willard Pellinen
Willard Pellinen
McLeod County Surveyor
License No. 9626

Date May 23, 1992

OFFICE OF THE COUNTY RECORDER MCLEOD COUNTY, MINNESOTA.

I hereby certify that this document was filed in this office at 9 o'clock A.M. on the 9th day of June, 1992.

Armen Abille, County Recorder
By _____, Deputy

Document No. 245788

EAST QUARTER corner, Section 10, Township 117 North, Range 28 West

Certificate of Location of Government Corner

1856. Oscar Taylor of the General Land Office established this corner. He set a post and marked an aspen and an elm for bearing trees.

May 8, 1972. McCombs Knutson Associates (Dickman Knutson, county surveyor) dug for the corner, John Tupa from Hutchinson with a backhoe. Down 4 feet below the road surface they found a rotted wood stake. They took available reference ties.

January 20, 1976. Knutson set a spike at the corner and took additional ties.

July 9, 1976. Knutson set a McLeod County cast iron monument at the corner. This corner fell on the center line of the north south road in line with a fence to the west and a field line to the east.

July 12, 1985. We found the monument in good condition and took ties to reset the corner after road construction.

November 20, 1986. We reset the corner and took new reference ties. All old ties destroyed by road construction. We set a spike at the corner.

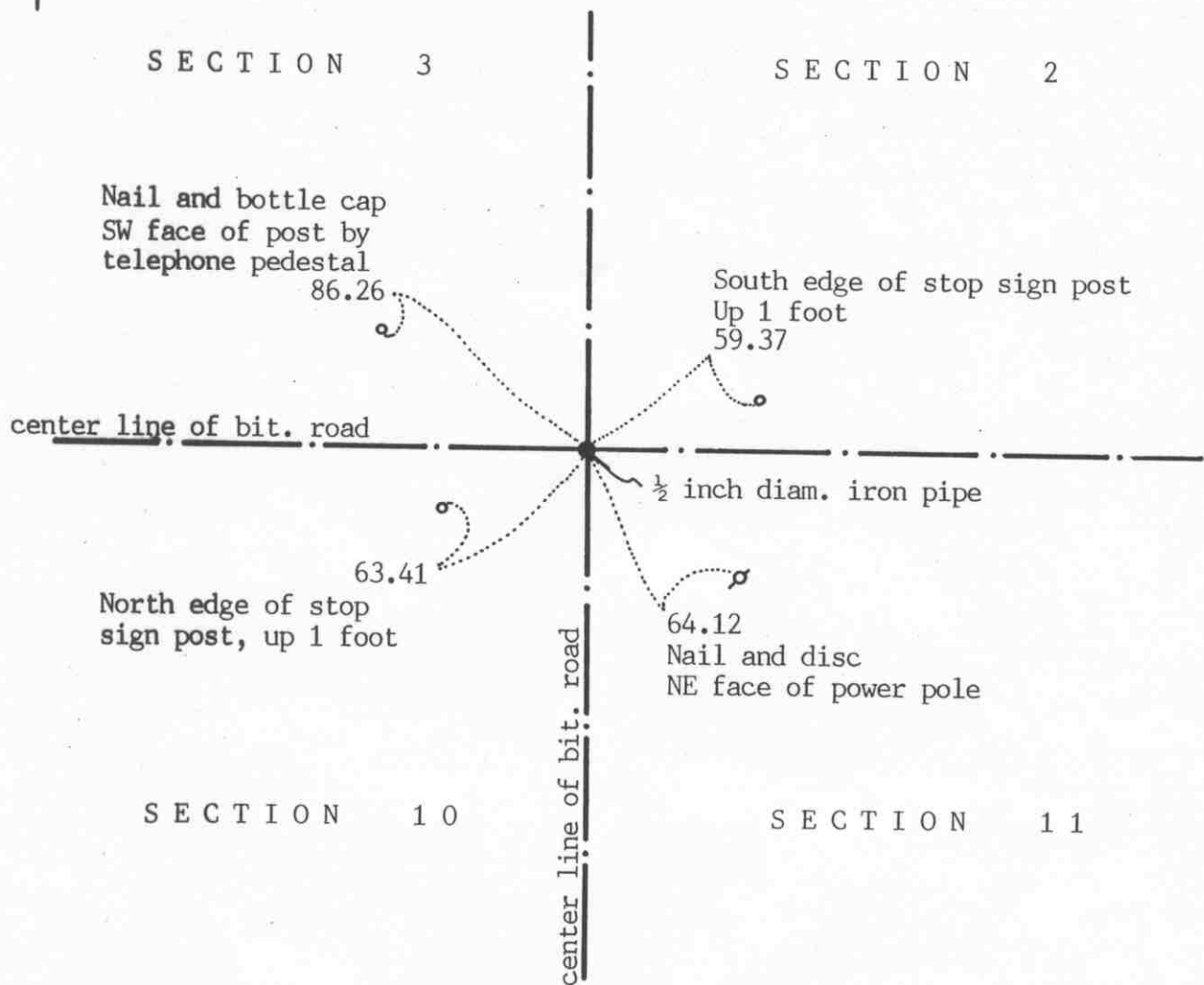
June 4, 1987. We set 2 $\frac{1}{2}$ inch diameter iron pipes at the corner. These were 14 inch long and we set one on top of the other.

We accept the location of the corner as set by Knutson as marking the correct corner.

August 14, 1991. We checked the reference ties to the iron pipe.

Certificate of Location of Government Corner

SKETCH OF REFERENCE TIES
(NO SCALE)



Statement of evidence relative to this corner location on sheet 2

I hereby certify that this document was prepared by me or under my direct supervision.

Willard Pellinen
Willard Pellinen
McLeod County Surveyor
License No. 9626

Date May 23, 1992

OFFICE OF THE COUNTY RECORDER
MCLEOD COUNTY, MINNESOTA.

I hereby certify that this document was filed in this office at 9 o'clock A.M. on the 9th day of June, 1992.

Armen Bellie, County Recorder

By _____, Deputy

Document No. 245787

NORTHEAST corner, Section 10, Township 117 North, Range 28 West

Certificate of Location of Government Corner

1856. Oscar Taylor of the General Land Office originally established this corner. He set a post and marked 3 elms and a linden for bearing trees.

May 5, 1927. Carlisle Madson, Sr., county surveyor, found a rotted wood stake at the corner. This was on the center line intersection of the roads. He measured 2652.5 feet to the east quarter corner of Section 3 and 2613.5 feet to the north quarter corner of Section 11.

May 8, 1972. McCombs Knutson Associates (Dickman Knutson, county surveyor) dug for corner, John Tupa from Hutchinson with a backhoe. Down 2 feet below the road surface they found a 1 inch diameter steel pin, 12 inches long. They took reference ties and dug a hole 8 feet by 8 feet and 5 feet deep but found nothing else.

January 20, 1976. Knutson set a spike at the corner and took additional reference ties.

July 9, 1976. Knutson set a McLeod County cast iron monument at the corner.

July 12, 1985. We took new ties which wouldn't be destroyed by road construction.

November 20, 1986. We reset the corner after the road construction, a spike, and took new reference ties.

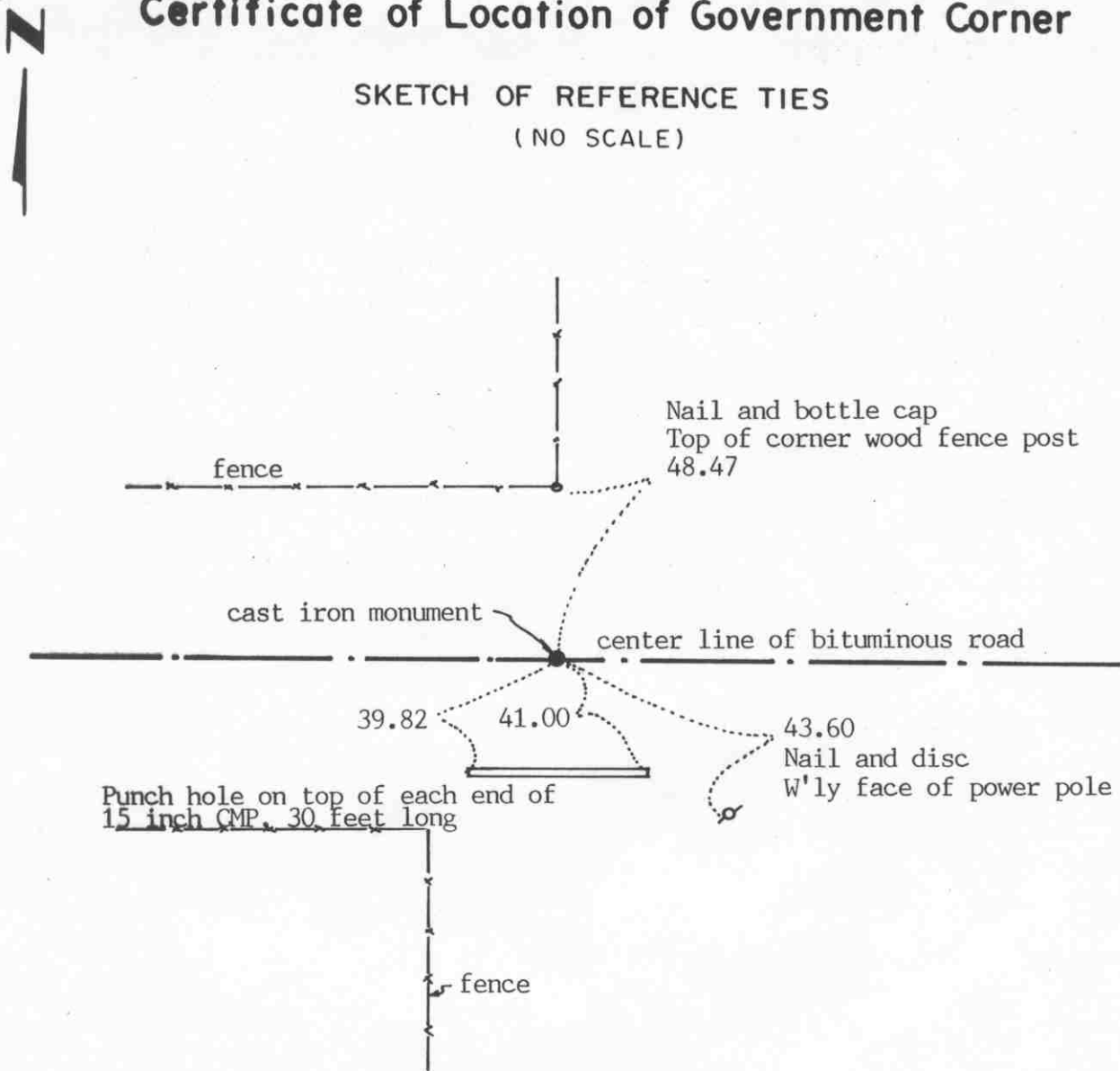
June 4, 1987. We set 2 ½ inch diameter iron pipes, 14 inches long at the corner, one deep and one flush with the bituminous road.

August 14, 1991. We checked the reference ties to the iron pipe.

We accept the location as marked by Knutson as being the correct location of the section corner. It perpetuates the location of an older monument and we measured 2613.05 feet to the north quarter corner of Section 13, compared with 2613.5 feet by Madson in 1929. We measured 2651.68 feet to the east quarter corner of Section 3, compared with 2652.5 feet by Madson.

Certificate of Location of Government Corner

SKETCH OF REFERENCE TIES (NO SCALE)



Statement of evidence relative to this corner location on sheet 2

I hereby certify that this document was prepared by me or under my direct supervision.

Willard Pellinen

Willard Pellinen
McLeod County Surveyor
License No. 9626

Date June 13, 1992

OFFICE OF THE COUNTY RECORDER
MCLEOD COUNTY, MINNESOTA.

I hereby certify that this document was filed in this office at 9 o'clock A. M. on the 15th day of July, 19 92.

Carmen Ostlie, County Recorder

By _____, Deputy

Document No. 246441

NORTH QUARTER corner, Section 10, Township 117 North, Range 28 West

Certificate of Location of Government Corner

1856. Oscar Taylor of the General Land Office set a post in a marsh. He marked an elm and an aspen for bearing trees.

February 21, 1975. We measured the north line of section 10 and set a temporary quarter corner on the center line of the east-west road in line with a fence to the north.

June 5, 1975. We excavated for the corner, John Tupa from Hutchinson with a backhoe. Down 5 feet below the road surface we found a rotted wood post. We tied it off and directly below the wood post we found a 10 inch diameter stone. We left the stone in place.

July 9, 1975. We set a McLeod County cast iron monument at the corner and took additional reference ties.

Old county highway department field notes show a stone at the corner and we measured within $\frac{1}{2}$ foot of their distance to the northeast corner of Section 10.

We accept the stone and wood post as having perpetuated the correct location of the quarter corner.

August 19, 1991. We found the monument in good condition but only one tie remaining. We took new reference ties.

Certificate of Location of Government Corner



SKETCH OF REFERENCE TIES

(NO SCALE)

SECTION 11

SECTION 12

Nail and disc
North face of power pole
31.97

cast iron monument

center line of road

Nail and disc
East face of power pole
330.85

171.76
Nail and disc
North face of power pole

center line of road

Statement of evidence relative to this corner location on sheet 2

I hereby certify that this document was prepared by me or under my direct supervision.

Willard Pellinen
Willard Pellinen
McLeod County Surveyor
License No. 9626

Date July 4, 1992

OFFICE OF THE COUNTY RECORDER
MCLEOD COUNTY, MINNESOTA.

I hereby certify that this document was filed in this office at 9 o'clock A.M. on the 15th day of July, 1992.

Armen Optiev, County Recorder

By _____, Deputy

Document No. 246443

Certificate of Location of Government Corner

1856. Oscar Taylor of the General Land Office established this corner. He set a post and marked 2 oaks for bearing trees.

Old county highway department field notes show a stone at this corner.

June 5, 1975. McCombs Knutson Associates (Dickman Knutson, county surveyor) dug for the corner, John Tupa from Hutchinson with a backhoe. They found a 6 inch diameter stone down 2 feet below the road surface. They took reference ties and directly below the first stone they found a 15 inch diameter limestone, sharp point up, in the original ground. This was within $\frac{1}{2}$ foot of the county highway distance to the southeast corner of Section 11.

July 9, 1976. Knutson set a McLeod County cast iron monument.

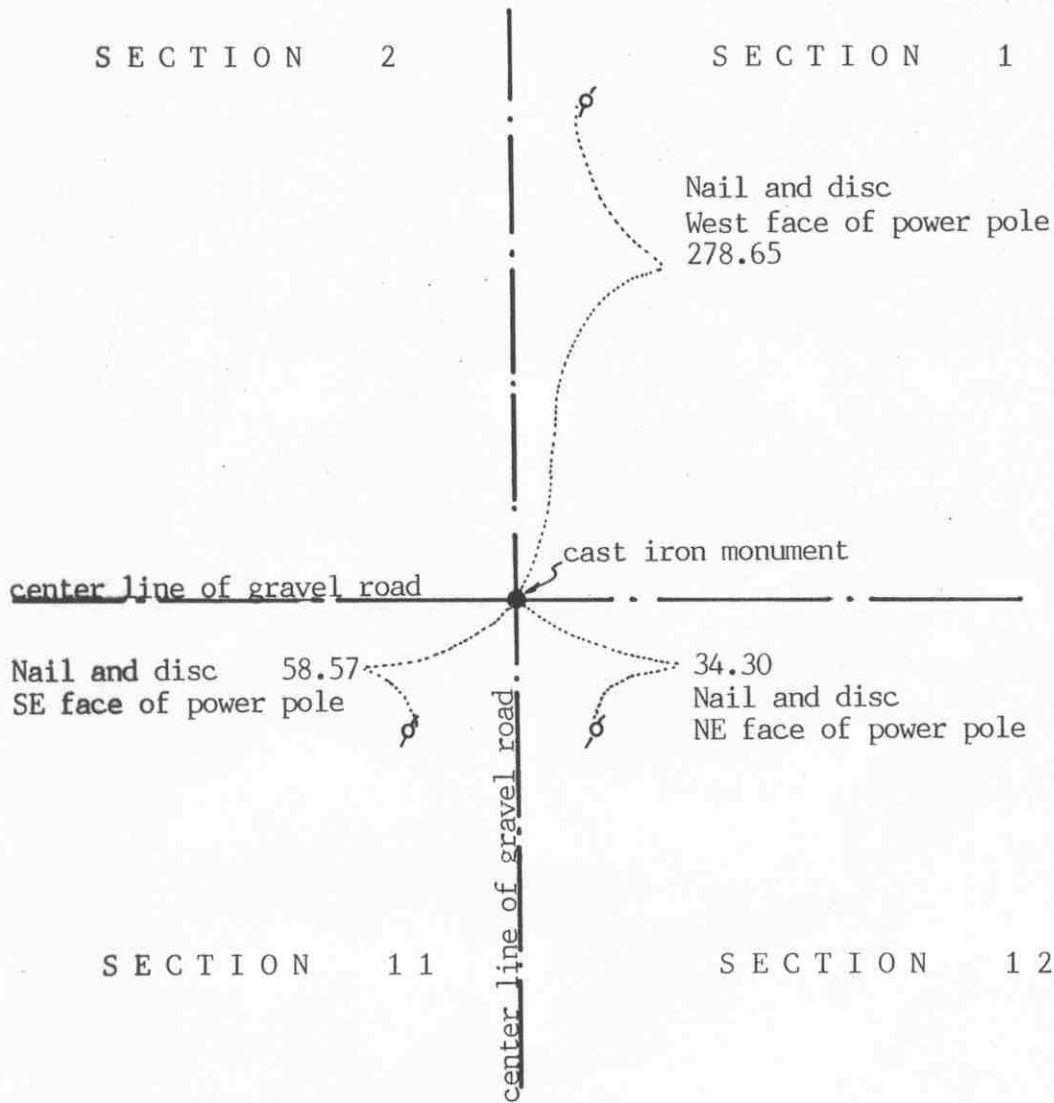
August 22, 1991. We found the monument in good condition and checked the reference ties.

The monument set by Knutson is accepted as marking the correct location of the quarter corner. It perpetuates an older monument, the stone and it fits the occupation lines, the center lines of the roads.

Certificate of Location of Government Corner

SKETCH OF REFERENCE TIES

(NO SCALE)



Statement of evidence relative to this corner on sheet 2

I hereby certify that this document was prepared by me or under my direct supervision.

Willard Pellinen
Willard Pellinen
McLeod County Surveyor
License No. 9626.

Date July 4, 1992

OFFICE OF THE COUNTY RECORDER
MCLEOD COUNTY, MINNESOTA.

I hereby certify that this document was filed in this office at 9 o'clock A.M. on the 15th day of July, 1992.

Carmen Cottie, County Recorder.

By _____ Deputy.

Document No. 246442

Certificate of Location of Government Corner

1856. Oscar Taylor of the General Land Office set a post and marked 2 ironwood trees an elm and a Linden tree for bearing trees.

1899. E. L. Higgins, county surveyor measured 2627 feet to the east quarter corner of Section.

May 5, 1922. Carlisle Madson, Sr., surveyor, measured 2614 feet to the north quarter corner of Section 11.

June 5, 1975. McCombs Knutson Associates (Dickman Knutson, county surveyor) dug for the corner, John Tupa from Hutchinson with a backhoe. They found a 4 inch square, 8 inch long limestone, set on end down 4 feet below the road surface in the original ground.

July 9, 1976. Knutson set a McLeod County cast iron monument.

August 22, 1991. We found the monument in good condition and checked the reference ties.

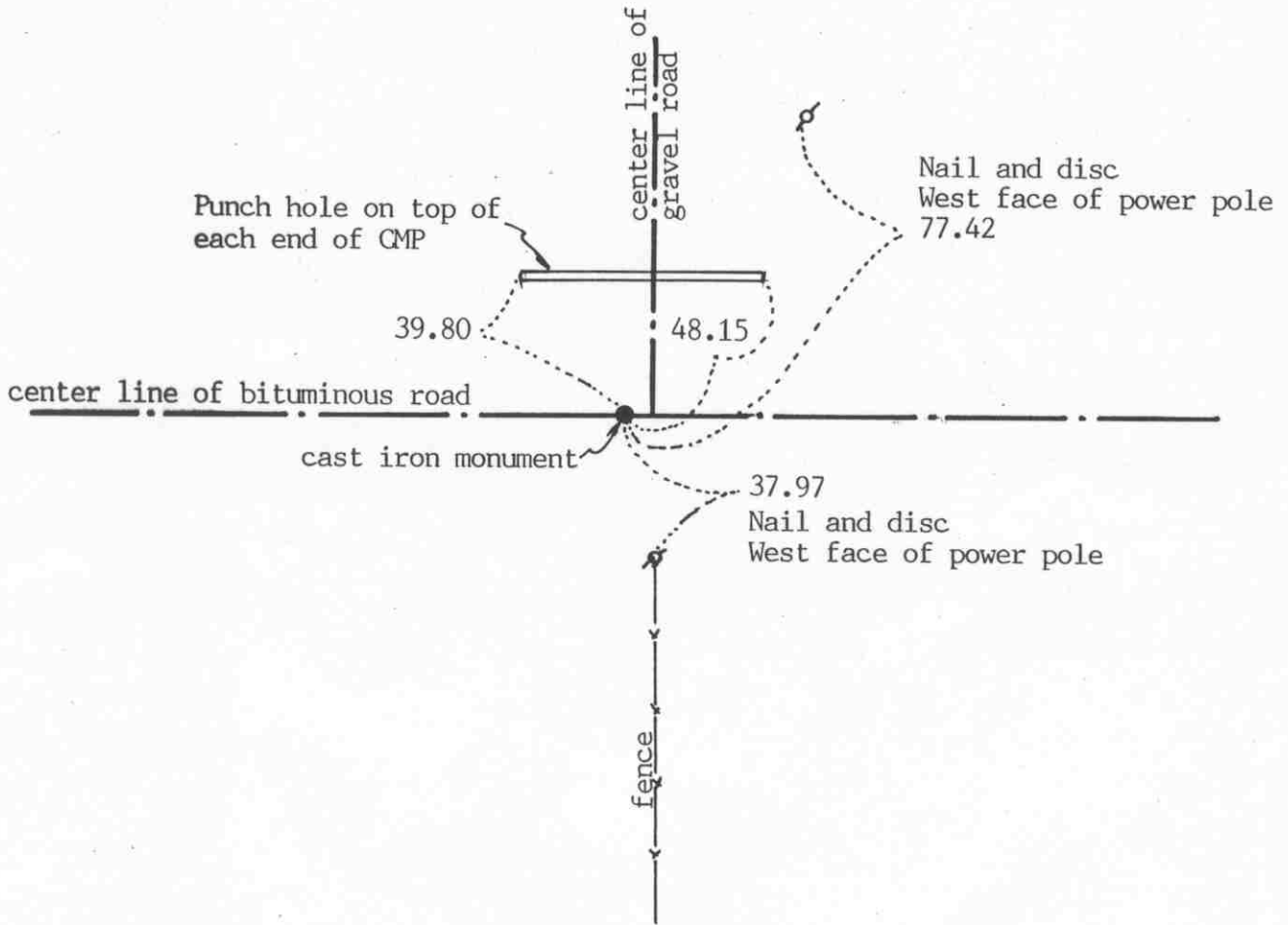
The cast iron monument set by Knutson is accepted as marking the correct location of the section corner. It perpetuates the location of an older monument, the stone, and it fits the occupation lines, the center line of the roads. We measured 2627.02 to the east quarter corner of Section 2 compared with 2627 by Higgins and we measured 2614.21 to the north quarter corner of Section 11 compared with 2614 by Madson.

NORTH QUARTER corner, Section 11, Township 117 North, Range 28 West

Certificate of Location of Government Corner

SKETCH OF REFERENCE TIES (NO SCALE)

SECTION 2



SECTION 11

Statement of evidence relative to this corner location on sheet 2

I hereby certify that this document was prepared by me or under my direct supervision.

Willard Pellinen
Willard Pellinen
McLeod County Surveyor
License No. 9626

Date June 13, 1992

OFFICE OF THE COUNTY RECORDER
MCLEOD COUNTY, MINNESOTA.

I hereby certify that this document was filed in this office at 9 o'clock A.M. on the 15th day of July, 1992.

Armen Ostlie, County Recorder

By _____, Deputy

Document No. 246444

NORTH QUARTER corner, Section 11, Township 117 North, Range 28 West.

Certificate of Location of Government Corner

1856. Oscar Taylor of the General Land Office set a post and marked 2 elms for bearing trees.

December 26, 1999. E.L. Higgins, county surveyor, shows a "post" at the corner.

May 5, 1922. Carlisle Madson, Sr., surveyor, found a half inch diam. iron pin at the corner. He measured 2613.5 feet to the northwest corner of the section and 2614.0 feet to the northeast corner of the section.

1940. County highway department found stone and iron pin at the corner.

February 21, 1975. We measured the north line of Section 11 and set a temporary quarter corner on the center line of the east-west road and the center line of the road running north.

June 5, 1975. We dug for the corner, John Tupa from Hutchinson with a backhoe. Down 3 feet below the road surface we found a flat, 3 inch by 10 inch diameter stone. We took reference ties and below this stone we found a 12 inch diameter stone with a sharp point up. These were about 6 feet west of the center line of the road running north and we dug a hole 12 feet long to the center line of the north road but found nothing else. This corner falls 2613.05 feet from the northwest corner compared with 2613.05 by Madson in 1922 and 2614.21 feet from the northeast corner compared with 2614.00 by Madson.

July 9, 1976. We set a McLeod County cast iron monument at the corner and took additional ties.

We feel the stones we found have perpetuated the correct location of the quarter corner. Our distances east and west are very nearly the same as the 1922 distances.

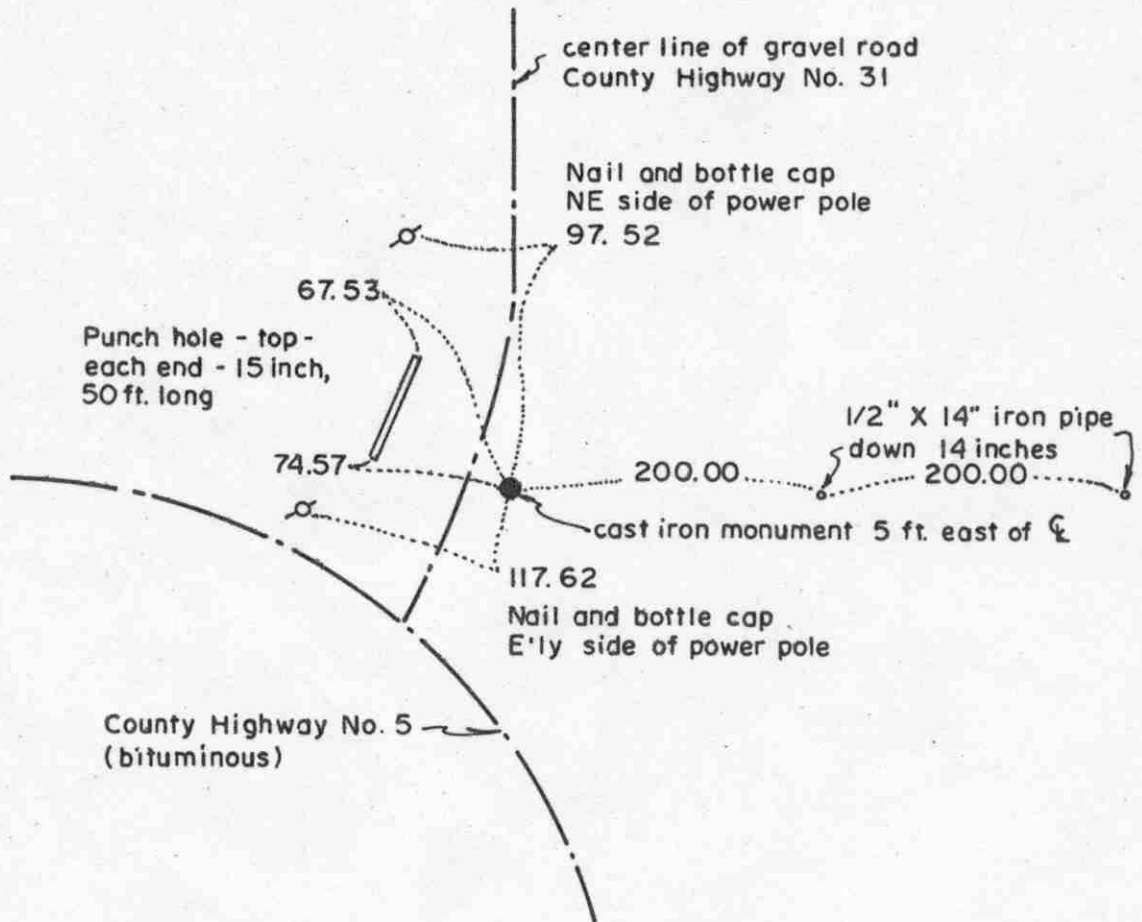
August 19, 1991. We found the cast iron monument in good condition and checked the reference ties.

Certificate of Location of Government Corner



SKETCH OF REFERENCE TIES

(NO SCALE)



Statement of evidence relative to this corner location on sheet 2

I hereby certify that this document was prepared by me or under my direct supervision.

Willard Pellinen
 Willard Pellinen
 McLeod County Surveyor
 License No. 9626

Date 2/9/89

OFFICE OF THE COUNTY RECORDER
 MCLEOD COUNTY, MINNESOTA.

I hereby certify that this document was filed in this office at 9 o'clock A.M. on the 15th day of Feb, 1989.

Carmen Ostlie, County Recorder

By _____, Deputy

Document No. 226952

Certificate of Location of Government Corner

This corner was originally set in 1855 by John Ryan of the Government Land Office. He set a post and took reference ties to 2 bearing trees.

In December, 1968, we measured the east line of Section 12 and set a temporary east quarter corner at the center line intersection of the roads.

In October, 1970, we dug for the corner with a backhoe and found a rotted wood stake down $2\frac{1}{2}$ feet below the road surface. We took available ties and in May, 1972, we set a McLeod County cast iron monument at the corner.

On June 18, 1986, we found the cast iron monument, top broken off, down 2 feet below the road surface. We took new reference ties and set a 1/2 inch by 14 inch iron pipe over the monument, top down 3 inches below the road surface.

On June 1, 1988, we retied the corner, road to be graded.

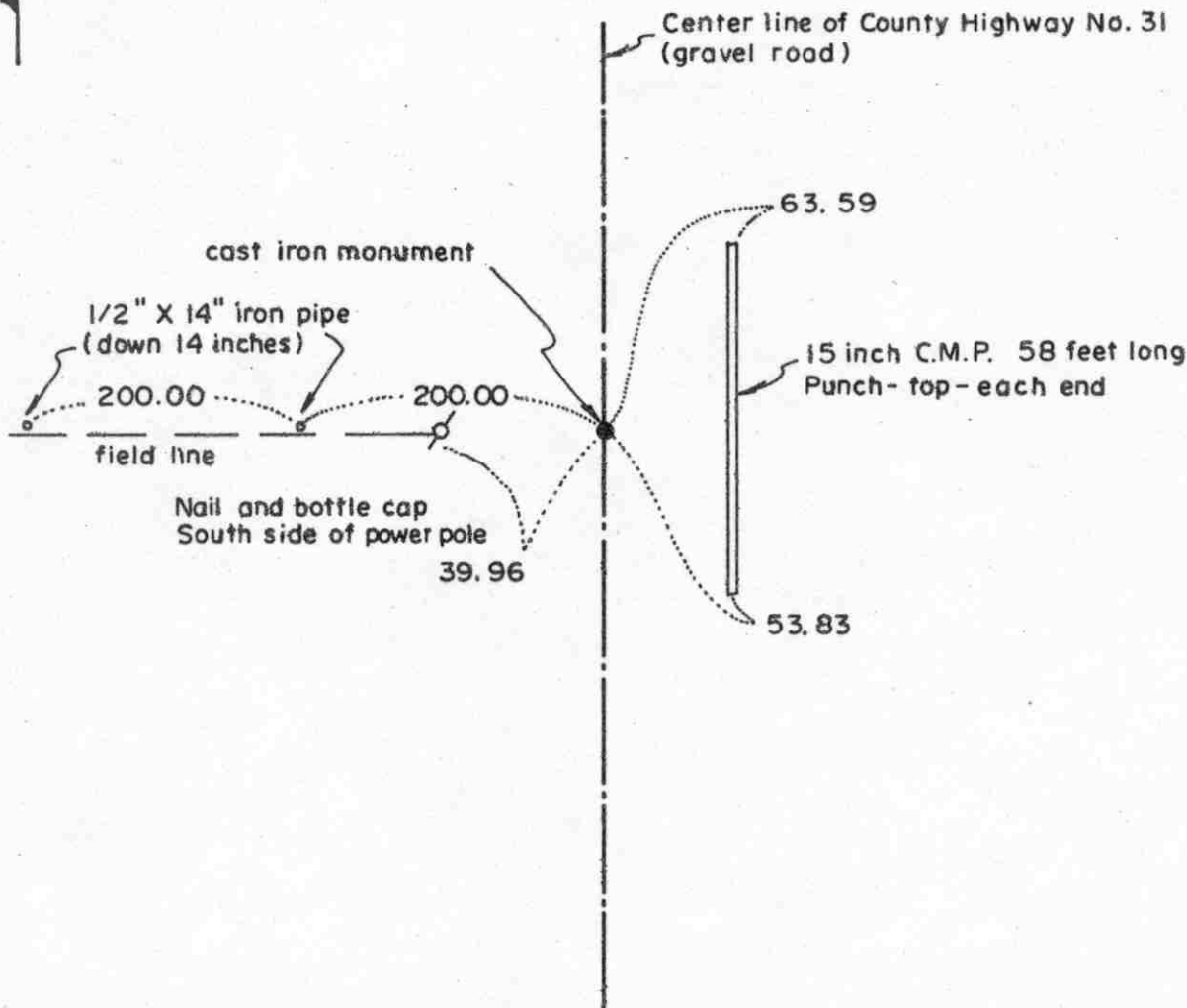
On July 28, 1988, we set $\frac{1}{2}$ inch by 14 inch iron pipe at the corner, and on August 5, 1988, we replaced the iron pipe with a McLeod County cast iron monument, with a 14 inch iron pipe below the monument, and took new reference ties.

We feel the wood stake and the center line of the roads has perpetuated the location of the east quarter corner of Section 12.

Certificate of Location of Government Corner



SKETCH OF REFERENCE TIES
(NO SCALE)



Statement of evidence relative to this corner location on sheet 2

I hereby certify that this document was prepared by me or under my direct supervision.

Willard Pellinen

Willard Pellinen
McLeod County Surveyor
License No. 9626

Date 2/8/89

OFFICE OF THE COUNTY RECORDER
MCLEOD COUNTY, MINNESOTA.

I hereby certify that this document was filed in this office at 9 o'clock A.M. on the 15th day of Feb., 1989.

Carmen Ootie, County Recorder

By _____, Deputy

Document No. 226951

Certificate of Location of Government Corner

This corner was established in September, 1855, by John Ryan of the Government Land Office. He set a post and took reference ties to 4 bearing trees.

In 1899, E.L.Higgins reset the corner using the ties to the bearing trees.

In December, 1968, we measured the east line of Section 12 and Section 1 and set a temporary corner.

In October, 1970, we dug for the corner and found a rotted wood stake below the road surface at the original ground. We took available ties and in May, 1972, we set a McLeod County cast iron monument.

On June 1, 1988, we retied the corner, road to be graded.

On July 28, 1988, we reset the corner, a $\frac{1}{2}$ inch diam. iron pipe, and on August 5, 1988, we replaced the pipe with a McLeod County cast iron monument. Top of monument down 4 inches below the road surface with a $\frac{1}{2}$ inch by 14 inch iron pipe below the monument.

The location of this corner has been perpetuated by the stake set by Higgins in 1899 and later by the iron pipe and the cast iron monument.

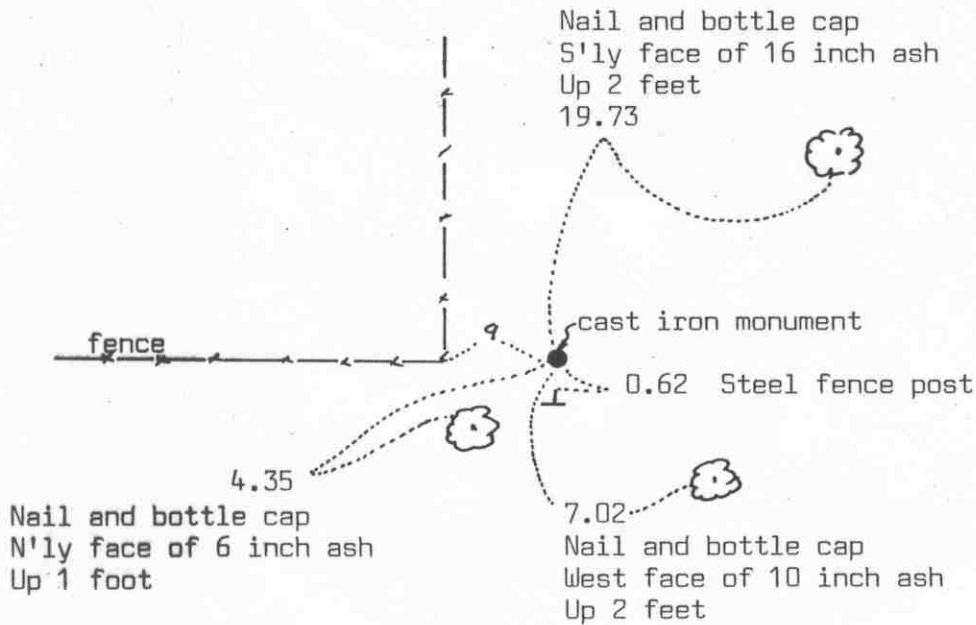
Certificate of Location of Government Corner



SKETCH OF REFERENCE TIES

(NO SCALE)

SECTION 1



SECTION 12

Statement of evidence relative to this corner location on sheet 2

I hereby certify that this document was prepared by me or under my direct supervision.

Willard Pellinen

Willard Pellinen
McLeod County Surveyor
License No. 9626

Date July 26, 1992

OFFICE OF THE COUNTY RECORDER
MCLEOD COUNTY, MINNESOTA.

I hereby certify that this document was filed in this office at 9 o'clock A.M. on the 30th day of July, 1992.

Sarman Ostlie, County Recorder

By _____, Deputy

Document No. 246810

NORTH QUARTER corner, Section 12, Township 117 North, Range 28 West

Certificate of Location of Government Corner

1855. Oscar Taylor of the General Land Office set a post at the corner and marked an oak and a willow for bearing trees.

September 18, 1974. McCombs Knutson Associates (Dickman Knutson, county surveyor) set an iron pipe at the corner on line with a fence to the west and a fence to the south and on line with the center of a ditch to the north, as per testimony by Mr Jerome Hemerick, 42 years old and had lived in the Southwest Quarter of Section 1 for 15 years. He said the fences are on the section line and quarter line and the ditch was built on the north south quarter line of Section 1. Mrs Julien, in the Southeast Quarter of Section 1 agrees. Knutson took reference ties to the iron pipe.

November 7, 1974. Knutson replaced the iron pipe with a McLeod County cast iron monument.

August 26, 1991. We found the monument in good condition and took new reference ties.

We feel this was an obliterated corner whose location has been perpetuated by the old fences.